

SEPTEMBER 2024 EDITION

eeq JOURNAL

NEWS FROM ENERGIEQUELLE

FINLAND

VISIT FROM MINISTER
FOR CLIMATE AND
ENVIRONMENT

INTERVIEW

WITH COMMERZ REAL

BUSINESS DEVELOPMENT

SUSTAINABLE AND EFFICIENT
PARENT-CHILD CLINIC

Content

PROJECT DEVELOPMENTS
ZEVEN, TESCHENDORF, EULITZ, MITTELHERWIGSDORF,
THÖRINGSWERDER 4

FINLAND
MINISTER’S VISIT TO LUMIVAARA..... 6

BUSINESS DEVELOPMENT
SUSTAINABLE AND EFFICIENT PARENT-CHILD CLINIC..... 8

CITIZEN AND COMMUNITY ENGAGEMENT
ACCEPTANCE AT ENERGIEQUELLE 10

OFFICE OPENINGS
IN CAPE TOWN, BREMEN AND GLYFADA – ATHENS..... 12

MOOD BAROMETER BEI ENERGIEQUELLE
HOW SATISFIED ARE OUR EMPLOYEES? 13

INTERVIEW
WITH JENS GEMMECKE AND PHILLIP-DOMINIK MICKAIL
FROM COMMERZ REAL..... 14

ENERGIEQUELLE EVENTS
SPORTING & INFORMATIVE 16

15 & 20 YEARS AT ENERGIEQUELLE
CELEBRATIONS & BEHIND THE SCENES 18

COMPETITION
WE VALUE YOUR OPINION! 19



Dear Readers,

In this edition of our customer magazine, we have, once again, put together a host of interesting topics and news items for you that reflect our continuing commitment to a sustainable future.

We are pleased to report on the progress we have made in our on-going projects and are particularly proud of the visit Finland’s Minister of Climate and the Environment made recently to our Luminvaara wind farm. You can also read about the opening of our three new offices at different locations around the world.

A key focus of our work is citizen engagement. Learn how we provide local residents and communities with regular and transparent updates on our ongoing projects and the variety of ways in which they can actively benefit from them.

To round off this edition, we have an exclusive interview with Commerz Real, which reveals first hand how financial institutions assess and support our projects and visions.

Let us inspire you – and keep you curious!

In other words,
enjoy reading!

Michael Raschemann
Managing Director & Owner of Energiequelle



Do something good for nature:

With this edition of our magazine, we are giving you a sachet of flower seeds. Use them to bring a piece of nature to your home and make your contribution towards promoting biodiversity.

FOLLOW US ON SOCIAL MEDIA



Project Developments

Almost 100 MW of grid connections in the coming months



Construction Teschendorf Wind Farm

After around ten years of planning and an approval process that took nine months to complete, we have finally been able to start construction work at our 21 MW large wind farm in Teschendorf in Lower Saxony. Four Enercon E-138 wind turbines, each with a hub height of 130m and 4.2 MW of nominal power are under construction. In the future, they will supply approximately 17,000 homes with green electricity. The annual output of the wind farm is estimated to be roughly 60,000,000 kWh.

Construction Eulitz Wind Farm

In Saxony, we have begun construction work on two wind turbines. The Enercon E-160s, each with a hub height of 166 metres and 5.56 megawatts of nominal power, are being built in the district of Meißen. An unforeseen change to the type of wind turbine meant that the start of construction work was delayed. Despite this, we are pleased to report that commissioning is already scheduled to take place at the end of this year.



Commissioning Mittelherwigsdorf Wind Farm

Three wind turbines have recently been commissioned in Mittelherwigsdorf (Saxony). The repowering project, implemented in coordination with Alterric Deutschland GmbH involved dismantling eight old E-40, E-66 and E-70 turbines and replacing them with three E-138s. Each new turbine has a hub height of 160 metres and 4.2 MW of nominal power. Repowering has increased the electricity output sixfold at three locations, meaning that around 11,000 homes can now be supplied with electricity from renewable sources.

Commissioning Thöringswerder Solar Farm

We have extended an existing ground-mounted solar farm near Wriezen in Brandenburg by 2.16 MWp. The 132-cell modules fall into the 690 Wp+ power category. They have been installed on wasteland that was previously used for the storage of sugar beet. Despite challenging soil conditions, the successful commissioning of the solar farm has made it possible to sustainably revitalise the redundant land and use it for power generation.

Construction Zeven Wind Farm

Also, in Lower Saxony, we are currently building nine Vestas V162 wind turbines, each with a hub height of 169 metres and 6 MW of nominal power. Before construction could begin, we had to overcome a number of challenges, which resulted in a delay of more than six months. The wind farm will have 54 MW of nominal power in total and is scheduled for commissioning in spring 2025. In the future, it will generate enough electricity for approximately 40,000 homes.



Lumivaara – Finland

Visit by Finland's Minister for Climate and Environment

In June, we were delighted to welcome Kai Mykkänen, Finland's Minister of Climate and Environment, to our Lumivaara wind farm. Kai Mykkänen is the leading decision-maker in the Finnish government for matters relating to renewable energies. As Head of the Ministry of the Environment, he is responsible for climate policy, nature protection, preventing environmental pollution and supporting the circular economy. His visit underlines the government's trust in us and the importance of renewable energies for the future of Finland.

Kai Mykkänen's visit to our Lumivaara wind farm was a special highlight, as he was given the opportunity to climb to the top of a wind turbine. The impressive Nordex N163, with 5.7 MW of nominal power and a hub height of 126 metres, stands on one of the highest Kainuus hills and offers breathtaking views from more than 400 metres above sea level. Of course, such a visit demands careful planning and strict safety measures.

Weeks before the visit, safety plans, risk assessments and rescue plans were drawn up. The Minister was given a detailed briefing, in order to ensure that his visit was as safe as possible. Thanks go to our staff and partners, among them the wind turbine manufacturer Nordex and the wind farm owners KlimaVest / Commerz Real for their help in making the event such a great success. During the visit, it was emphasised that, moving forward, wind energy will play a leading role in the green transi-

tion, as well as in the hydrogen industry of Finland and Europe. Together with solar energy, it is the only energy source that can replace fossil fuels on a large scale this decade.

Energiequelle Oy are actively engaged in various sustainable energy associations in Finland and are playing a key role in shaping the country's energy policy. Nils Borstelmann, Managing Director of Energiequelle Oy, is a board member of the Finnish Wind Power Association: "Our collaboration with policy makers and government officials is crucial to communicating the importance of renewable energies and to accelerating the transition to a green economy."

Minister Mykkänen's visit was a strong signal in favour of supporting renewable energies and shows how the industry and government can work together to drive forward the energy transition.

Image: Minister Kai Mykkänen (right) and Andreas Högnabba, Head of Grids and Construction at Energiequelle Finland (left)

Business Development

SUSTAINABLE AND EFFICIENT PARENT-CHILD CLINIC

For several years now, the business development team at Energiequelle GmbH has been working in partnership with a leading chain of medical rehabilitation clinics to make their buildings more environmentally friendly and economical to run. To achieve this, an integrated solution comprising photovoltaics, heat generation and distribution and control technology has been implemented at their parent-child clinic in Grömitz in Schleswig-Holstein.

As well as offering a wide range of leisure activities and experiences, Germany's health resorts and spas provide excellent medical rehabilitation services. It is hardly surprising that the Consortium of Parent-Child Clinics has chosen 12 locations with a climate that is particularly beneficial to health, where they support mothers or fathers with their children through rehabilitation, prevention treatment and advice. The North Sea, the Baltic Sea, the shores of Bavaria's rivers and lakes or thermal baths are all peaceful locations where patients of all ages benefit from the favourable climate. In order to accommodate and treat their patients, the clinics need a range of technologies and a lot of power. The consortium has recognised this and is stepping up to the challenge with

increased efficiency and sustainability in the healthcare sector. The clinic in Grömitz is located on the embankments of the Baltic Sea. In 2023 and 2024, the consortium invested in an efficient heating system and a photovoltaic plant. The photovoltaic plant consists of over 230 modules with almost 100 kWp of rated power. Most of the electricity generated is consumed in the clinic and the use of this PV plant alone avoids more than 39 tons of CO₂ emissions each year.

Through co-generation in a combined heat and power plant, it is possible to generate electricity and heat from a single energy source. Conventional gas-fired power plants, which generate electricity from natural gas, release unused heat into the atmosphere, whereas the heat from the combined heat and power plant in Grömitz is used in the clinic. Using the energy efficiently for co-generation also reduces the need for resources. A heat pump, which will operate alongside the combined heat and power plant, will be used to update the heating system. The most interesting feature, however, is the integration of the systems and the use of a sustainable three pipe system. The system consists of a high-temperature flow pipe, a low-temperature flow pipe and a return pipe.

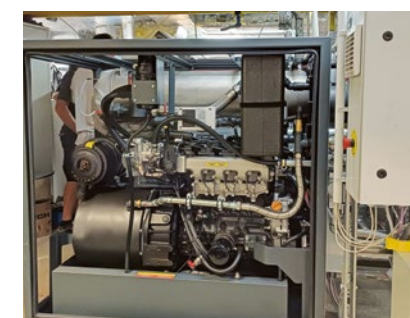
The plants are integrated in a way that makes best use of their technologies. The heat in the return pipe is transferred to the low-temperature flow pipe, thereby making use of the remaining heat. Moving forward, the system will allow for the easy integration of new high-temperature technology into the heating supply. A lot has been done to make the clinic ready for tomorrow's world. A sizeable proportion of the energy it needs is now generated on site and consumed efficiently. Measurement and control technology is a key factor when it comes to energy consumption.

The use of this technology, together with the efficient consumption of the power generated, enables remote access to the heating system. The system is monitored, and any necessary optimisation efforts can be foreseen and implemented quickly. The reduction in energy consumption became apparent after just a short time and was also noticed immediately by the energy provider. Not only are the Consortium of Parent-Child Clinics and the business development team at Energiequelle GmbH happy with the project's success, but it also provides a valuable practical example of the sustainable and efficient running of a building.



Measurement & Control Technology

- 2500 m cables
- Approx. 120 data points
- Remote access to the heating automation



Generation & Distribution of Heat

- 30 kW_{el} electrical power (CHP)
- 621 kW_{th} total thermal power
- Sustainable three-pipe system



Rooftop Photovoltaic System

- 238 modules
- 96 kWp PV generating power
- 39t/year avoided CO₂ emissions

Image: Grömitz, view from the beach to the pier
© Malchen53, commons.wikimedia.org



Citizen and Community Engagement

Regional added value a key factor for project acceptance

Key factors in gaining acceptance of wind energy projects are effective communication, transparency, and opportunities for financial benefit. We focus strongly on these, as we strive to involve the local people and win them over for our projects. This is because, after all, we can only achieve the energy transition if we work together. Long-term co-operation with stakeholders and local communities will enable us to meet the ambitious climate targets that have been set, while at the same time generating added value for the region. Our driving force is the desire to work hand in hand with the people to unite the different interests in the best possible way.



STEFFEN DIETRICH

Senior Manager Citizen Engagement



It is important that we involve local residents and communities in our projects. To do this, we visit them, talk to them, and develop ways in which they can benefit financially. We also involve local businesses and service providers as much as possible.

EARLY PROVISION OF INFORMATION & ACTIVE INVOLVEMENT

We rely on our dialogue with the local people and involve them at an early stage. We contact landowners, residents, and other stakeholders in the region, using various formats, above all, our popular “Bürgercafé” gatherings. We make a point of taking any comments or requests that are raised during these meetings into consideration in our planning.



Image: Bürgercafé

FINANCIAL BENEFITS FOR COMMUNITIES, NEIGHBOURS AND LANDOWNERS

For several years now, we have been committed to providing appropriate financial benefits for local people and communities. They can choose from a variety of models, which one is the most suitable for them. This could, for example, be direct or indirect financial involvement in an operating company, the fully independent operation of individual wind turbines, support from us for their clubs or societies, or lower-priced electricity for residents.

By having us as a partner, communities also benefit directly from our projects. Energiequelle GmbH always adheres to the regulation set out in Section 6 of the Renewable Energy Sources Act (2023), whereby 0.2 cent/kWh should be paid to the local community. We commit to this voluntary payment at an early stage, within the scope of what is legally possible. An increasing number of federal states in Germany are introducing their own community benefit regulations and, in each case, Energiequelle meets or even exceeds them.

OTHER COMMUNITY BENEFIT MODELS: HEATING SYSTEMS, EV-CHARGING INFRASTRUCTURE, SELF-OPERATION AND MANY MORE

New ways in which communities can benefit from wind or solar projects are continuously being introduced. For example, analysis and counselling on the installation of a heating system, e-charging infrastructure or LED lighting can be carried out in order to make the region ready for the future. The self-operation of wind turbines or solar plants by the community can contribute to maximising the added value for the region. From an active contribution by the community to the energy transition, the identification with renewable energy power plants or self-sufficiency with participation by the community, self-operation can be on very different levels and for very different reasons. It is crucial that we have a trustworthy working relationship with the active stakeholders in politics and administration, landowners, and neighbours. Moreover, co-operation with local industrial businesses and electricity providers can create further added value and is becoming increasingly important.

For a number of years now, we have sold our own electricity product, **eqSTROM**, which gives consumers living in the vicinity of a wind farm access to lower-priced green electricity. Through our **Energiequelle Foundation**, we award grants for social and charitable projects in the regions in which we operate.

International Expansion

New offices in South Africa, Bremen and Greece

Our company continues to grow, and we have recently opened new offices in Cape Town and Athens, as well as a second one in Bremen



Cape Town

Opening date: March 2024
Address: Spaces V&A Waterfront Junction
Stanley & Dock Road | 8001 Cape Town

In March of this year, we opened an office in Cape Town, our first in South Africa. Our team, led by Stefan Sager, the new managing director of our South African subsidiary, has moved into an office in a coworking space. The location has the advantage of being close to the offices of our leading business partners, the exhibition centre, the Central Business District, and the Waterfront.



Bremen

Opening date: June 2024
Address: Teerhof 59 | 28199 Bremen

In addition to our existing office in the north of Bremen, we now have a presence in the city centre. The modern office building is located between the River Weser and one of its branches and, as well as providing a fantastic view from its windows, also benefits from the city centre's infrastructure. Not only our sales and finance team but also our colleagues in the international and project services department can now be contacted in the new office.



Glyfada – Athens

Opening date: July 2024
Address: Regus Business Center | 33 Zeppou Street
16675 Glyfada | Greece

Our new office in Glyfada, a prestigious suburb of Athens, is located on one of Athens' main streets and is impressive on account of it being close to the sea. Excellent public transport links to the city centre and the airport are a major advantage for us.

ENERGIEQUELLE MOOD BAROMETER

How satisfied are our employees?



The fourth Energiequelle mood barometer was held on 22 April 2024 in Berlin. The event is organised by a group of employees who represent the interests of their colleagues and serves to capture the general mood among those working for the company.

Ahead of the event, 27 delegates, together representing every team in Germany, collected suggestions and requests, which their team colleagues felt were important. These were discussed at the mood barometer event and consolidated, so that each issue could be incorporated into a general mood chart.

Alongside personal satisfaction, satisfaction within their team and general awareness of satisfaction at Energiequelle, everyone was asked to disclose their own highlights and lowlights. The format also gave employees the opportunity to put forward their own individual concerns or wishes regarding their work at Energiequelle.

The result: Energiequelle can be pleased with the continually high level of employee satisfaction that exists within the company. Special comment was made with regard to the appreciation shown to staff, collegiality, and good working conditions. Highlights for everyone included were the many events organised by Energiequelle for their staff, such as the 25th anniversary party last May or the annual beachball tournaments, as well as the many training courses in which they can participate.



MICHAEL RASCHEMANN
Managing Director & Owner of Energiequelle



I am delighted with the results of the mood barometer. They demonstrate that the appreciation we show our staff is acknowledged. I am also especially proud of our minimal staff fluctuation.



Looking for an employer with a high level of employee satisfaction?
Scan here for our current vacancies!



INTERVIEW

with Jens Gemmecke and
Phillip-Dominik Mickail from Commerz Real



Jens Gemmecke

Head of Infrastructure Transactions

When and how did you first make contact with Energiequelle?

We began working together in 2022, when we participated as an investor in the bidding process for one of Energiequelle's wind farms.

What exactly does Commerz Real do? Who are your customers and what does your business model look like?

Commerz Real is an asset manager and a member of the Commerzbank Group. We specialise in tangible assets, in particular, real estate, renewable energies, and other infrastructure assets. We collect capital from private and institutional investors and bundle it into customised fund structures. Our open-ended hausInvest real estate fund has been on the market for more than 50 years and is worth 17 million euros. Most investments in renewable energies are made through our klimaVest fund, which was launched almost four years ago and has 1.4 billion euros at its disposal. We launched our first renewables funds back in 2005. In total, we currently manage investments in around 100 operational wind and solar parks in Germany and Europe for our investors.

Who do you work with at Energiequelle?

We work closely with the sales and finance team, and with the legal department.

What is so special about working with our colleagues at Energiequelle?

Our contacts at Energiequelle distinguish themselves with their expertise and reliability, as well as their perseverance in negotiations. They never make promises that they cannot keep. The result is a trusting and fruitful business relationship, based on clear and realistic expectations.

What is special about working with Commerz Real and which values do you bring to your dealings with customers and partners?

We have been committed to our "real values" of expertise and passion for tangible assets for more than 50 years now. Moreover, in our investments, we always position our investors' requirements and society as a whole at the forefront. We believe in the strength of networks and our aim is to establish successful, long-term business relationships with our partners.

What do you consider to be the biggest challenges currently faced by the energy industry?

In our opinion, these are the slow pace of grid expansion, sluggish approval processes and skills shortages, which make it increasingly difficult to find qualified staff for the operation and expansion of energy infrastructure. Work has to be done on all of these if we are to seriously pursue the targets that have been set for the energy transition.

How many projects have you already implemented with Energiequelle and what were they?

To date, we have implemented three projects for our global klimaVest fund. They are all onshore wind farms at various locations in Finland, with over 115 megawatts of nominal power in total.

How do you see our future together?

We can envisage working on further projects with Energiequelle in the future, as our co-operation has proven to be successful. We are always on the lookout in Europe for new projects for our institutional investment funds and our klimaVest funds for private investors.



Phillip-Dominik Mickail

Senior Investment Manager



Foto: Klimastreik Bremen

Energiequelle Events sporting & informative

CLIMATE STRIKE

In May, several colleagues from Energiequelle again joined the climate strikes throughout Germany, to stand together for a sustainable future. For us as a company, it is important that we use this opportunity to demonstrate in public our passion and commitment to renewable energies.

HEALTH DAY

Energiequelle's latest "Health Day" was held on 13 June 2024, with staff invited to participate in a wide variety of activities and presentations under the heading "Prevention instead of Aftercare". Alongside pedalling a "smoothie bike" to produce their own smoothies and testing an age simulation suit, they were offered free skin cancer screening and mobility training exercises.

FUTURE DAY

Again this year, we gave young people the opportunity to dive into the world of renewable energies and to gain initial insight into the apprenticeship opportunities available to them within the industry. At our "Future Day" on 25 April 2024, pupils from Bremen and Kallinchen enjoyed a lively programme of events, which included interactive presentations, a rally, and a virtual climb to the top of a wind turbine. The highlight was a visit afterwards to a real wind turbine, where they learned a lot of interesting and exciting facts about wind energy.



BEACH VOLLEYBALL

It came around again this year: "eq meets friends". Our annual beach volleyball tournament in Kallinchen attracted a total of 24 teams, made up of business partners and Energiequelle staff. A spell of rain did nothing to dampen anyone's spirits and the teams all fought bravely for victory. The highlight was a show match by the "Energiequelle Netzhoppers KW" volleyball club, who play in the first league and are sponsored by us.



CORPORATE RUNS MAGDEBURG & ROSTOCK

Our team in Rostock donned their running gear on 26 June 2024, when tropical temperatures, sunshine and a light breeze made the Haedje Peninsula in Rostock city harbour the perfect event arena for around 1,000 teams. Our colleagues in Saxony-Anhalt were at the starting line when this year's corporate relay race took place on 27 June in Magdeburg. The "Windläufer" completed the 15 km with a best time of 1 hour 7 minutes, securing 30th place in a field of 377 teams in their category.



TOUR DE WIND – CYCLE RALLYE

Four of our Polish colleagues took part in the "Tour de Wind" cycle rally and, despite adverse weather conditions, succeeded in completing the 60-kilometre-long route. The rally is a unique cycling event, which brings together supporters of renewable energies.



**WindEnergy
Hamburg**
The global on & offshore event

24 – 27 September 2024

**Visit us in Hall A1,
Stand 232!**

Congratulations!

20 years at Energiequelle



JUTTA HELMS

Regional Assistant
Operational Management Northwest
since 1 April 2004

Jutta Helms began work on 1 April 2004 in our secretarial department in Bremen, where she was responsible for making sure that every assignment was implemented smoothly. She soon discovered a liking for the variety of work in operational management and moved departments. Since then, she has been a dependable and competent support in every respect. Dear Jutta, thank you for your commitment and your unfailing reliability at work. We wish you all the very best for your retirement.



ANDREA KÖRBER

Senior Spezialistin GIS
GIS International & Project Services
since 23 August 2004

Andrea Körber joined us in Kallinchen on 23 August 2004 and for a long time was responsible for securing transmission routes. In January 2021, she became a GIS senior specialist and knows exactly what she is talking about when she compares the appearance of Earth to a potato – as she is just as fond of good food as she is of geographical data. With her sharp mind, she has made a valuable contribution to the implementation of various IT systems. Dear Andrea, we thank you dearly for your outstanding commitment and look forward to working with you in the years to come.

15 Years at Energiequelle



PAVAO ORABOVIC

Facility Manager
since 1 April 2009



FLORIAN SCHAMPER

Specialist Asset Management
since 1 September 2009



THOMAS SCHÜBEL

Technician Operational Management
since 1 August 2009



KIRSTEN DONKER

Head of Controlling / Corporate Investment
Management Department
since 11 September 2009

Behind the Scenes

As a colleague who is often "on the road", Christoph regularly has to deal with minor dramas and slips easily into a variety of roles – but that is not all. As well as working at Energiequelle, the trained actor can be found performing with his crime theatre company "The Auftakter", or playing Benny of the Olsenbande on the open-air stage at Eisenhardt Castle in Bad Belzig. One or two of his colleagues and even whole departments have been sighted in the audience at some of his performances!

CHRISTOPH BEUING

Project Management
Berlin



We value your opinion!

We need your help to improve our customer magazine!

Please take 5 minutes to complete our survey and at the same time secure the chance to win an exclusive package of Energiequelle merchandising worth €50! Your feedback will help us to understand what you need and to present you with even better content in the future.

To the survey:



Simply scan the QR
code or follow the
link below.

<https://forms.office.com/e/S94yGAXxLf>

We look forward to receiving your feedback and wish you the best of luck in the competition!

Your Energiequelle Editorial Team



IMPRINT

Publisher: Energiequelle GmbH, Hauptstraße 44,
15806 Zossen, T +49 3376 98 71 0

Responsible for Content: Yara Sewing and Editorial Team

Design: Energiequelle: Kyra Becker

Printer: BerlinDruck GmbH + Co KG

Copyright: All texts and images are subject to copyright.
The copyright is held by Energiequelle GmbH.

Images: Energiequelle GmbH, Shutterstock, SchmidtKord,
Enercon

Print-run: 2,400 copies



Energiequelle GmbH

Head Office Kallinchen near Berlin

Hauptstraße 44
15806 Zossen OT Kallinchen
T +49 33769 871 0

www.energiequelle.de
info@energiequelle.de



**A list of our locations is available
on our website.**

